



SINCE 1885

SETH NANDRAM DAULATRAM BIYANI

# BARITE

"We export Barite with yearly export volumes of  
10,000-20,000 MT."



*"Creating Chemistry between India and the World"*



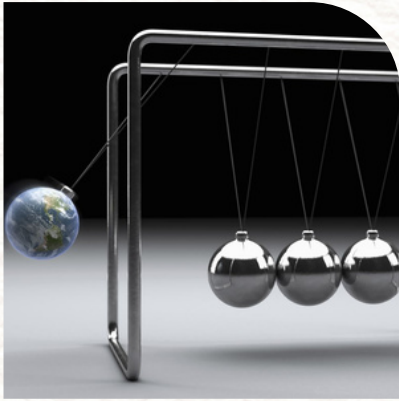
# About Barite

- Barite is a mineral composed of barium sulfate ( $\text{BaSO}_4$ ). Its name is derived from the Greek word "barys," which means "heavy." The mineral barite was named because of its high specific gravity of 4.5, for a nonmetallic mineral. Because of its high specific gravity, barite is perfect for a wide range of industrial, medical, and manufacturing uses.
- Furthermore, barite is the main resource for barium. Barite is a common mineral found in sediments and sedimentary rocks; it is typically found in limestone and dolostone. It is often found close to the soil-bedrock contact and is used in industrial barite mining. It also forms concretions in sand and sandstone, sometimes resulting in "barite roses" composed of many sand grains.
- Apart from hydrothermal and sulfide ore veins, barite is also commonly found in ores containing antimony, cobalt, copper, lead, manganese, and silver. Sometimes, at hot springs, barite sinter is left behind.





# Features & Benefits



Strong Inertia



Moderate Rigidity



Good Stability



High Specific Gravity



Acid & Alkali proof



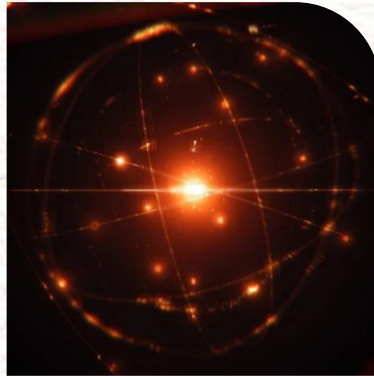
Highly Reactive



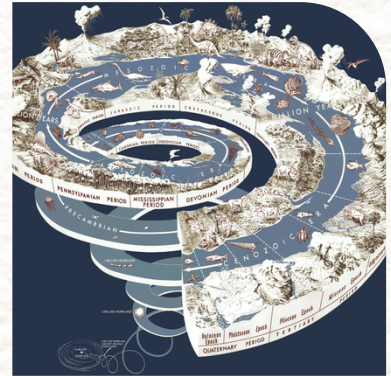
# Industrial applications



Oil and Gas drilling



Oxygen and Sulfur isotopic analysis



Geochronological dating



Ore of barium metal



Paint



Plastic filler



Paper



Textiles



Cement



# SPECIFICATION OVERVIEW

## ◆ Barite Lumps Specification: ◆

PARAMETER	SPECIFICATION		
	BARITE LUMPS GRADE 4.20 SG	BARITE LUMPS GRADE 4.10 SG	BARITE LUMPS GRADE 4.0 SG
Barite	Gray/White	Gray/White	Gray/White
Mesh	200	200	200
BaSO <sub>4</sub>	<90%	80 - 90%	70 - 80%
Specific gravity	4.20g/ml	4.10g/ml	4.0g/ml
Soluble carbonates	2500 mg/l	2500 mg/l	2500 mg/l
Moisture Content	1% Max	1% Max	1% Max
Water Soluble Alkaline Earth Metals as calcium	250mg/kg	250mg/kg	250mg/kg
Mercury	1.0 ppm Max	1.0 ppm Max	1.0 ppm Max
Cadmium	3.0 ppm Max	3.0 ppm Max	3.0 ppm Max

## ◆ Barite Powder Specification:

PARAMETER	SPECIFICATION		
	BARITE POWDER GRADE 4.20 SG	BARITE POWDER GRADE 4.10 SG	BARITE POWDER GRADE 4.0 SG
Barite	Gray/White	Gray/White	Gray/White
Mesh (75 Micron Test Seive)	200	200	200
BaSO <sub>4</sub>	>90%	80 - 90%	70 - 80%
Specific gravity	4.20g/ml	4.10g/ml	4.0g/ml
Soluble carbonates	2500 mg/l	2500 mg/l	2500 mg/l
Moisture Content	1% Max	1% Max	1% Max
Water Soluble Alkaline Earth Metals as calcium	250mg/kg	250mg/kg	250mg/kg
Mercury	1.0 ppm Max	1.0 ppm Max	1.0 ppm Max
Cadmium	3.0 ppm Max	3.0 ppm Max	3.0 ppm Max



# Contact Us

---



[SALES@SNDB.IN](mailto:SALES@SNDB.IN)



[+91-265-4605854](tel:+91-265-4605854)



[WWW.SNDB.IN](http://WWW.SNDB.IN)